



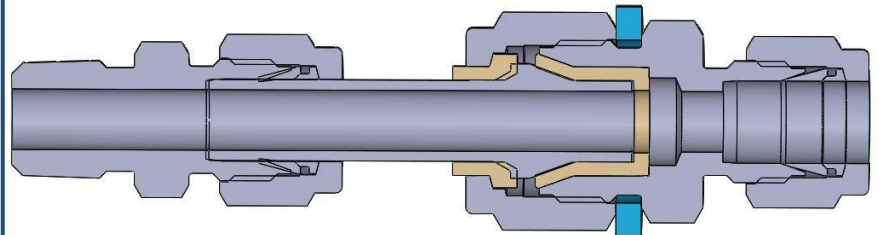
## TYLOK<sup>®</sup> Dielectric Fitting

**Tylok Dielectric Fittings** are insulated connections used to protect sensitive electrical components from electrical current potentially carried through tubing systems.

- 5,000 psig (344 bar) Pressure Rating
- -40° to 200°F (-40°C to 93°C) Temperature Rating
- Dielectric Strength  $\times 10^{10}$  Ohms @ 10 VDC
- Voltage breakdown resistance 4000 VDC

### FEATURES

- Blow-out Proof Stem
- Stainless Steel Construction
- PEEK Insulators
- Over-torque Prevention Ring
- Pressure Rating:  
5000 psi (344 bar) at 100° F  
(37° C)
- Temperature Rating:  
-40°F (-40°C) to 200°F (93°C)
- Size Range: 3/8" to 1/4", 3/8",  
1/2"
- End Connections:
  - TYLOK Tube End straight or elbow
  - Male NPT straight or elbow
  - Female NPT straight or elbow



Example above  
SS-6-6DMC-4-DE

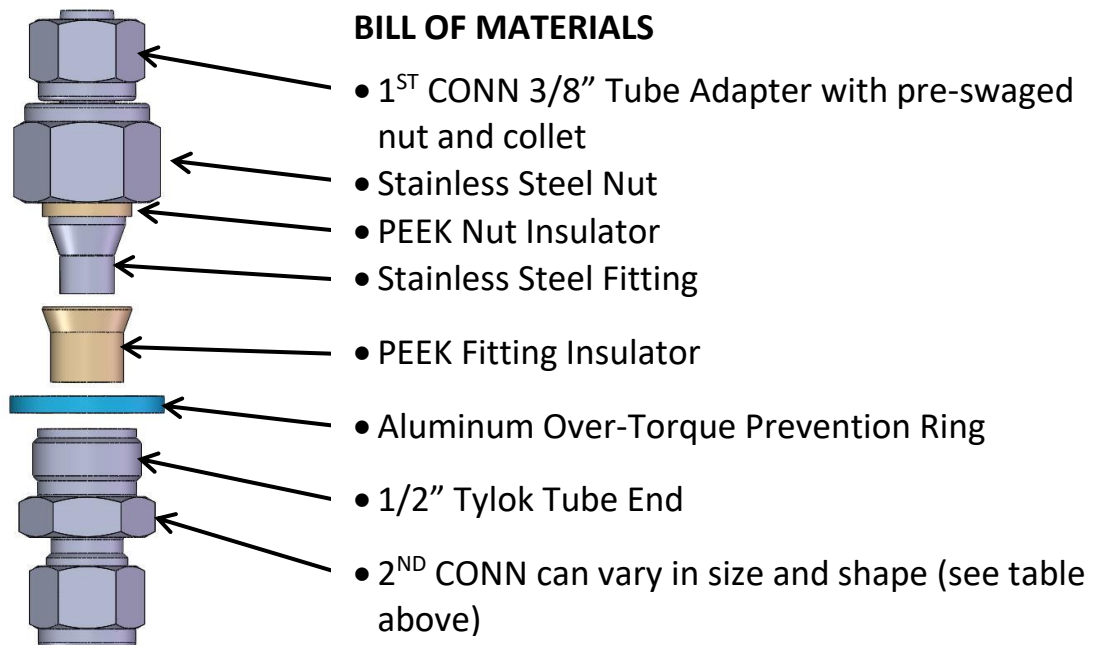
### TYPICAL APPLICATION – GAS TRANSMISSION

A typical application for a dielectric fitting is in the transmission of natural gas. The dielectric fitting insulates electric current flow that results from Current Cathodic Protection systems, static electricity, ground currents, etc.

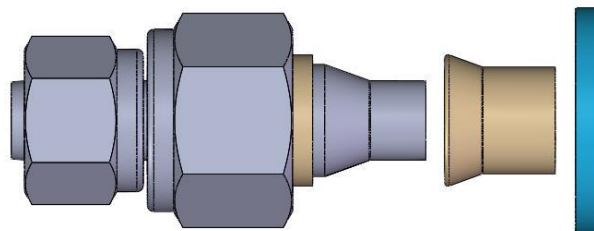
# TYLOK<sup>®</sup> DIELECTRIC FITTING

## ■ ORDERING INFORMATION

MATERIAL	1 <sup>ST</sup> CONNECTION SIZE	FITTING CONFIGURATION	2 <sup>ND</sup> CONNECTION SIZE	DIELECTRIC IDENTIFIER	DESCRIPTION
SS-	6-	-6HLFTG-	N/A	-DE	HALF FITTING
SS-	4 = 1/4" 6 = 3/8" 8 = 1/2"	-6DU- -6DRU- -6DRU-	4 = 1/4" 6 = 3/8" 8 = 1/2"	-DE	TYLOK TUBE END
SS-	4, 6, 8	-6DELU-	4, 6, 8	-DE	TYLOK TUBE END ELBOW
SS-	4, 6, 8	-6DMC-	4, 6, 8	-DE	MNPT STRAIGHT
SS-	4, 6, 8	-6DME-	4, 6, 8	-DE	MNPT ELBOW



Unique half fitting allows the other end to be configured as needed



HALF FITTING  
SS-6-6HLFTG-8-DE