

The BelGAS<sup>CP</sup> P7400 is a pneumatically controlled, high pressure valve designed for fluid level control. The valve automatically opens and closes by pneumatic control from a BelGAS level controller and dump valve operator. The P7400 can dump liquids compatible with construction materials. Depending on model, the P7400 operates on inlet pressures of 500, 1500, 1800, or 2000 PSI. All models operate on 30 to 70 PSI signal pressure.

### Applications

- Separators, scrubbers, and process vessels up to 2000 PSI supply

### Features

- **Simple Maintenance:** Topworks and trim can be removed for service without removing body from vessel.
- **Trim Size Options:** Customers can decide from 4 trim sizes, depending on flow and maximum supply pressure.
- **Valve Indicator:** Indicator visible from exterior for determining valve position.
- **Pressure Warning Hole:** A weep hole in union nut provides a warning if unit is pressurized upon disassembly.
- **Non-Freeze Design:** Plug and seat are suspended in media using heat from process fluids to prevent freezing.



### Dimensional Data

Body Size (in.)	ØA		B		C	
	in.	mm	in.	mm	in.	mm
1 MNPT	7.50	190.5	1.25	31.75	8.9	226.1
2 MNPT	7.50	190.5	1.25	31.75	10.2	259.1

Body Size (in.)	D		E	
	in.	mm	in.	mm
1 MNPT	2.25	57.15	2.00	50.80
2 MNPT	3.00	76.20	2.75	69.85

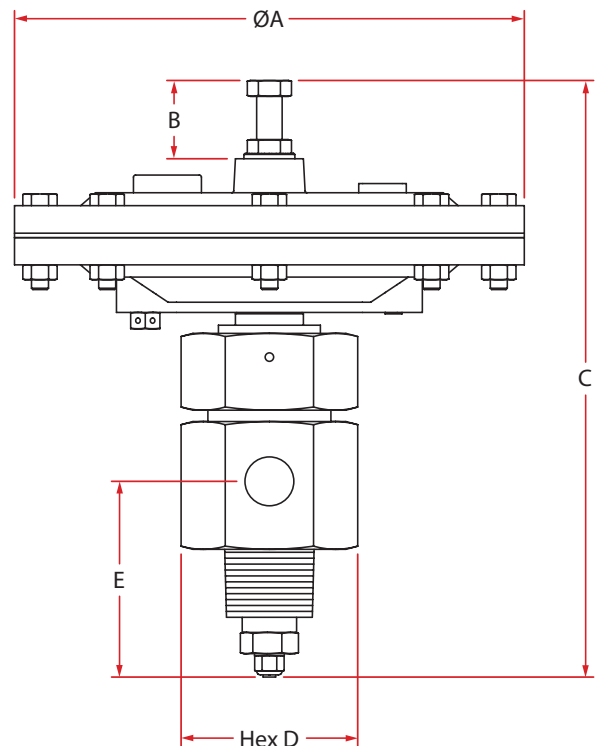
### Specifications

<b>Max Inlet Pressure</b>	1800 PSI (1" MNPT) 500, 1500 or 2000 PSI (2" MNPT)
<b>Signal Pressure Rating</b>	30 to 70 PSI
<b>Operating Temperature</b>	-20 to 300°F (-18 to 149°C)
<b>Weight</b>	9 lbs. (1" NPT) 17 lbs. (2" NPT)

### Materials of Construction

Part	Material
Body, Union Nut	Plated Steel
Diaphragm Support, Seat	Stainless Steel
Bonnet, Housing	Aluminum
Plug Assembly	Stainless Steel & Urethane or Stainless Steel & Teflon®
Stem, Spring Guide	Stainless Steel

Figure 1



## P7400 Part Matrix and Repair Kits

P74	51		0	0	S	A	0	0	R			
<b>Style</b>												
Closed, Non-NACE	51											
<b>Body Size</b>												
1" MNPT x 1/2" FNPT		52										
1" MNPT x 3/4" FNPT		53										
2" MNPT x 1" FNPT		56										
<b>Body Material</b>												
Carbon Steel					S							
<b>Body Style</b>												
Angle						A						
<b>Actuator Configuration</b>												
Pressure Opening									R			
<b>Seal Material</b>												
Nitrile (Buna-N)											0	
Fluorocarbon											2	
<b>Trim Material</b>												
Standard (Urethane)												0
PTFE												4
<b>Pressure Rating</b>												
500 PSI (Body Size Code 56 Only)												05
1500 PSI (Body Size Code 56 Only)												15
1800 PSI (Body Size Codes 52 & 53 Only)												18
2000 PSI (Body Size Code 56 Only)												20

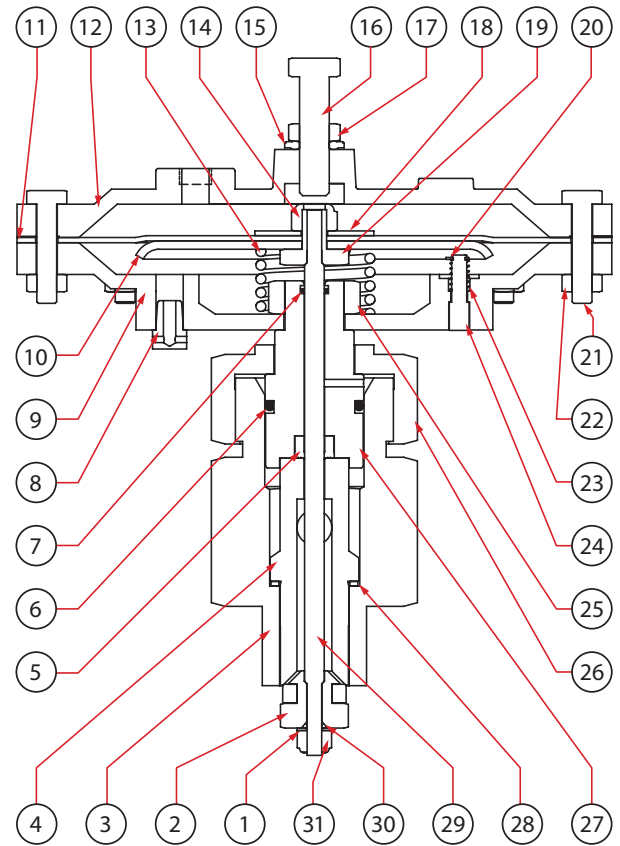
Seal Repair Kit		971P745	
<b>Supply Pressure Code</b>			
1800 PSI (1" Valve Only)		1	
500 PSI		2	
1500 PSI		3	
2000 PSI		4	
<b>Seal Material</b>			
Nitrile			0
Fluorocarbon			2

Diaphragm Repair Kit		971P741	
<b>Body Size</b>			
1" MNPT		1	
2" MNPT		2	
<b>Seal Material</b>			
Nitrile			0
Fluorocarbon			2

## P7400 Parts List

Item	Description	Qty.	Part Number
1	Washer, Stem	1	1" Version
			2" Version
2	Plug Assembly	1	1"
			1", PTFE
			2", 500 PSI
			2", 1500 PSI
			2", 1500 PSI, PTFE
			2", 2000 PSI
3	Body (MNPT x FNPT)	1	1" x 1/2"
			1" x 3/4"
			2" x 1"
4	Seat	1	1"
			2", 500 PSI
			2", 1500 PSI
			2", 2000 PSI
5	Packing	1	Nitrile 1"
			Fluorocarbon 1"
			Nitrile 2"
			Fluorocarbon 2"
6	O-ring, Diaphragm Support	1	Nitrile 1"
			Fluorocarbon 1"
			Nitrile 2"
			Fluorocarbon 2"
7	Quad Ring	1	Nitrile 1"
			Fluorocarbon 1"
			Nitrile 2"
			Fluorocarbon 2"
8	Breather	1	639-149-000
9	Housing	1	629-270-000
10	Diaphragm Plate	1	638-102-000
11	Diaphragm	1	Nitrile
			Fluorocarbon
12	Bonnet	1	604-565-000
13	Range Spring	1	655-795-000
14	Nyloc Nut	1	634-478-001
15	Seal Washer	1	662-231-000
16	Maintenance Bolt	1	648-590-000
17	Jam Nut	1	634-479-000
18	Washer	1	662-432-000
19	Spring Guide	1	1"
			2"
20	Retaining Ring	1	693-038-000
21	Cap Screw	8	648-466-006
22	Hex Nut	8	634-000-038
23	Indicator Spring	1	655-794-000
24	Indicator	1	635-091-000
25	Hex Nut	1	634-000-014
26	Union Nut	1	1"
			2"
27	Diaphragm Support	1	1"
			2"

Figure 2

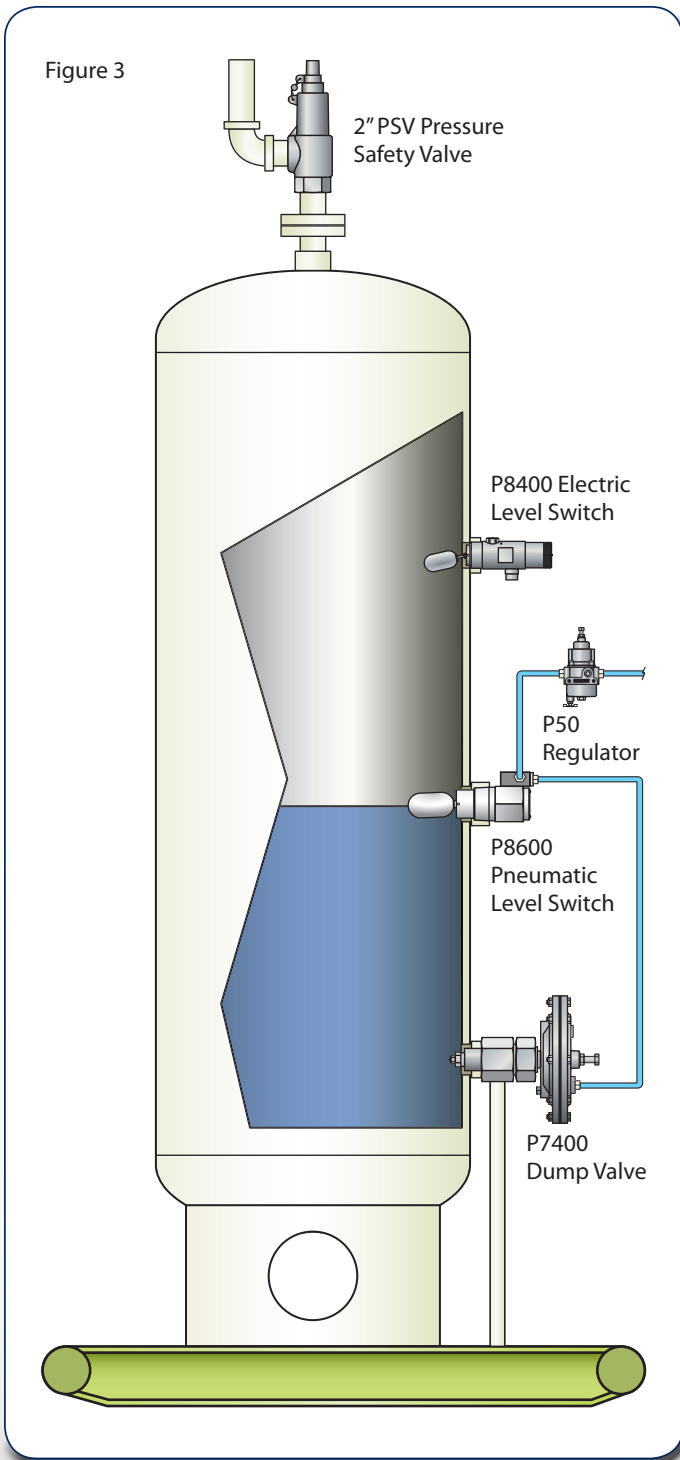


Item	Description	Qty.	Part Number
28	Sealing Washer	1	1"
			2"
29	Stem	1	1"
			2"
30	O-ring, Stem	1	Nitrile 1"
			Fluorocarbon 1"
			Nitrile 2"
			Fluorocarbon 2"
31	Nyloc Nut	1	1"
			2"

### Torque Specifications

Item	Description	Torque
26	Union Nut	1" MNPT Units
		2" MNPT Units
17	Jam Nut	20 ft.-lbs.
21	Cap Screw	80 in.-lbs.
14	Nyloc Nut (Internal)	11 ft.-lbs.

Figure 3



## The BelGAS<sup>CP</sup> Scrubber System Package

Our gas compressor scrubber system is designed with BelGAS<sup>CP</sup> series products that provide complete control of liquid with a high level switch to trigger an alarm or shutdown and a pneumatic switch that controls operation of a dump valve which protects the compressor by removing excess liquid.

- **P8400 Electric Level Switch:** The Stainless Steel float actuated high level switch engages alarm or shutdown.
- **P8600 Pneumatic Level Switch:** The pneumatic pressure that opens and closes the dump valve is controlled by this float actuated snap-acting level switch.
- **P7400 Pneumatic Dump Valves:** Dumps fluid from the compressor scrubber after receiving a pneumatic signal from the P8600 Pneumatic Level Switch.

Contact your BelGAS<sup>CP</sup> representative or go to [www.BelGASCP.com](http://www.BelGASCP.com) to learn more about our products.

**BelGAS<sup>CP</sup>**  
Control Products

**Trusted.  
Proven.  
Better.**

8019 Ohio River Blvd.  
Newell, WV 26050  
Toll Free: 800-727-5646  
sales@belgas.net  
www.BelGASCP.com

2221 SE 69th Street  
Oklahoma City, OK 73149  
Toll Free: 800-833-3127