

**LAMOT**<sup>®</sup>

**VALVE & ARRESTOR**

A GROTH CORPORATION BRAND

# THIEF HATCH

MODEL L12-TH



## PRODUCT OVERVIEW

The LaMOT Model L12-TH Thief Hatch was designed to out perform the competition, with industry leading high flow rates and precision tolerances to provide a superior sealing performance. The leakage is less than 1 SCFH of air @ 90% of the set pressure, keeping your tanks in compliance with industry standards.

The Model L12-TH Thief Hatch incorporates a spring loaded pressure/vacuum relief valve within the device. Thief Hatches are used on steel or fiberglass (FRP) low pressure storage tanks. Providing access for level gauging, sampling, and overpressure/vacuum protection for the tanks, all in one compact design.

## WHY THIEF HATCHES ARE REQUIRED

- Saves money by avoiding environmental standards fines
- Protects tank from overpressure/ vacuum when sized properly\*
- Minimizes evaporation emissions
- Reduces atmospheric corrosion of tank
- Required to meet industry compliance



## SUPERIOR SEALING PERFORMANCE

The leakage is less than 1 SCFH of Air @ 90% of the set pressure.

\*Calculate vent size in accordance with API Standard 2000 - Venting Atmospheric and Low-Pressure Storage Tanks and API 12.



## THIEF HATCH

An evolution of the Groth Corporation, LaMOT Valve & Arrestor funnels decades of industrial design, customer service, and made-to-order manufacturing into a new portfolio of upstream safety products. Living up to our heritage, the quality of our products is paramount, but our main focus is on people.

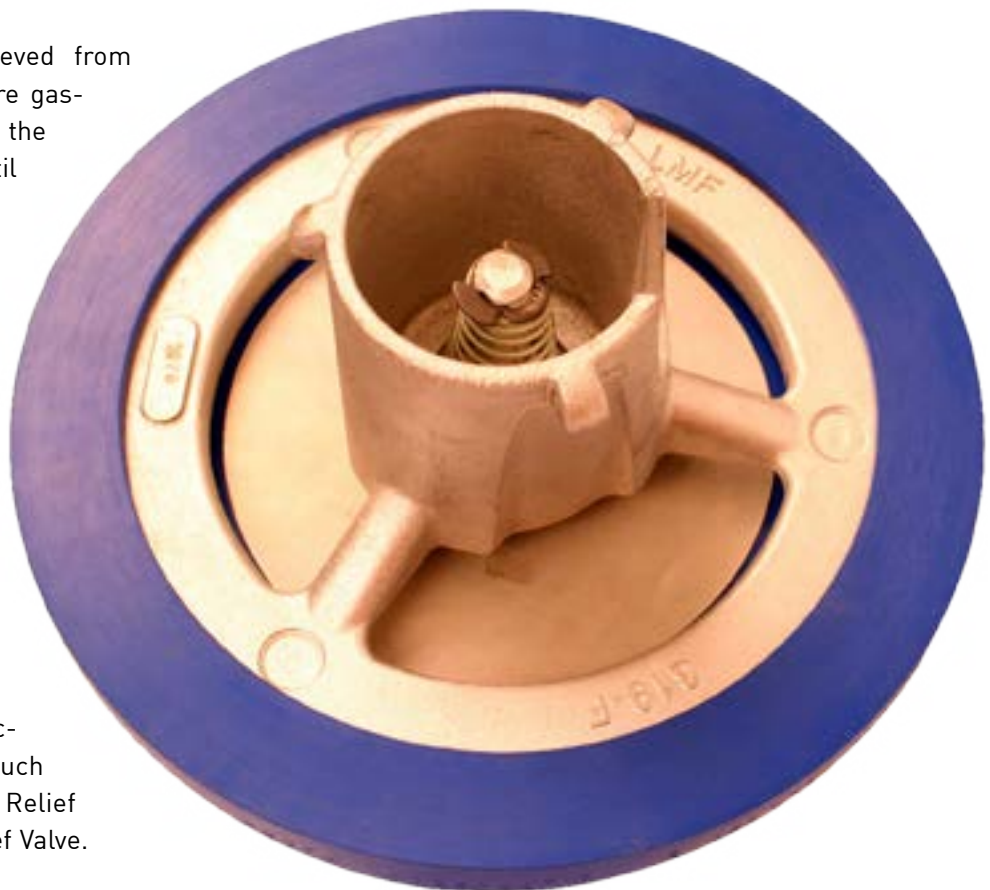
Extensive R&D has gone into the Model L12-TH Thief Hatch. We started with the end product in mind, focusing on the unique application solution. We were able to accomplish a product design with both superior sealing performance and industry leading flow rates. We paid high attention to detail in the precision machining and manufacturing to accomplish these exact tolerances.

Superior sealing is achieved from an active envelope pressure gasket that expands around the base to increase seal until the designated pressure setting is reached. This design saves you money by greatly reducing vapor loss compared to a traditional thief hatch design.

The most impressive feature of the precision engineered design is the high flow capacity. Savings can be immediately realized with a proper size reduction of other components such as the Pressure Vacuum Relief Valve and Emergency Relief Valve.

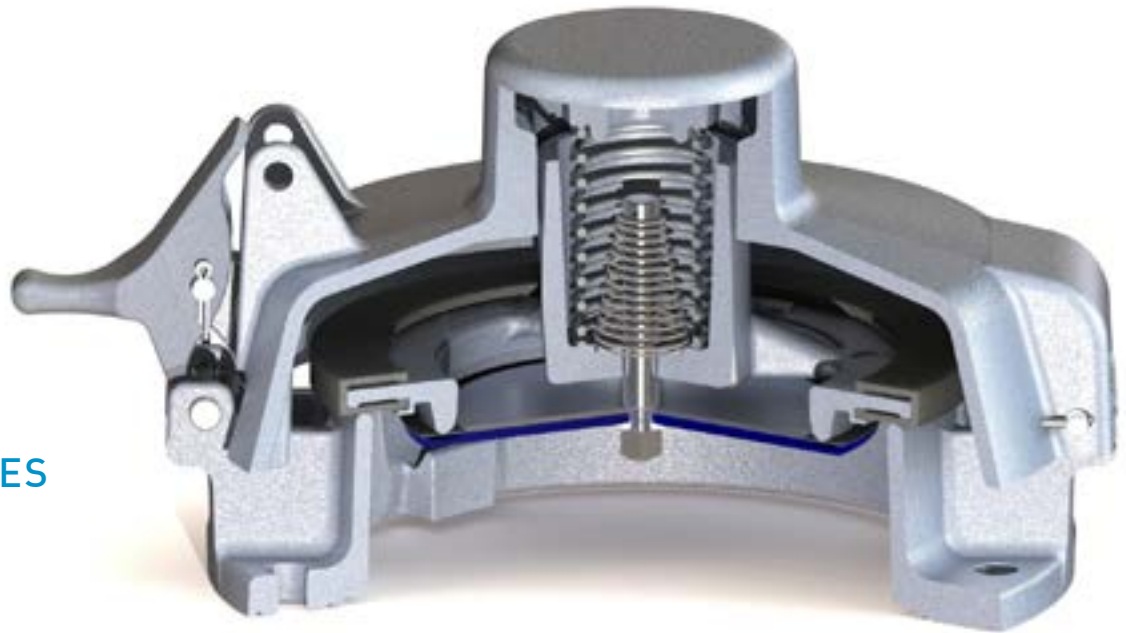
### HIGH FLOW CAPACITY

High flow capacity is the new standard set by the Model L12-TH Thief Hatch.





## MODEL L12-TH



### INDUSTRIES

Oil & Gas  
Liquid Storage

### FEATURES & BENEFITS

- Ultra-tight sealing reduces product leakage and fugitive emissions
- Higher flow capacity to protect from excessive pressure build up
- Designed for easy maintenance, thus reducing downtime and lower operational costs
- Corrosion resistance can be enhanced with FKM soft goods and coating
- Direct replacement for any standard round 8" API 12 thief hatch
- Incorporates a mechanical lock system to be used with a pad lock or lock out bar

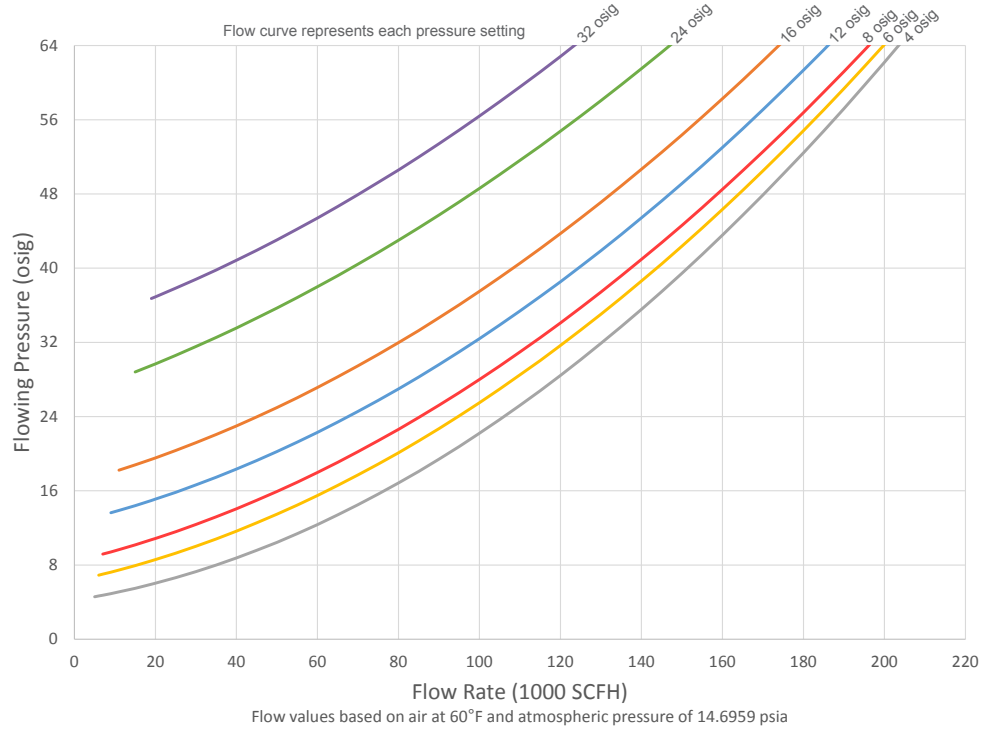
### TECHNICAL DETAILS

- Size: 8" (200 mm)
- Bolting: API 12
- Available Pressure Settings\*:  
4, 6, 8, 12, 16, 24 & 32 osig
- Available Vacuum Settings:  
0.4, 0.9 & 3.5 osig
- Leak Rate:  
1 SCFH air @ 90% of set pressure
- Materials of Construction:  
Casting: Aluminum (Non-Sparking)  
Envelope Gasket: HNBR, FKM,  
or Fluorosilicone  
Vacuum Diaphragm: HNBR, FKM,  
Fluorosilicone, or Fluoropolymer
- Optional: Polyester/PTFE Coating
- Accessories: Flange (base) Gasket, Mounting Kit

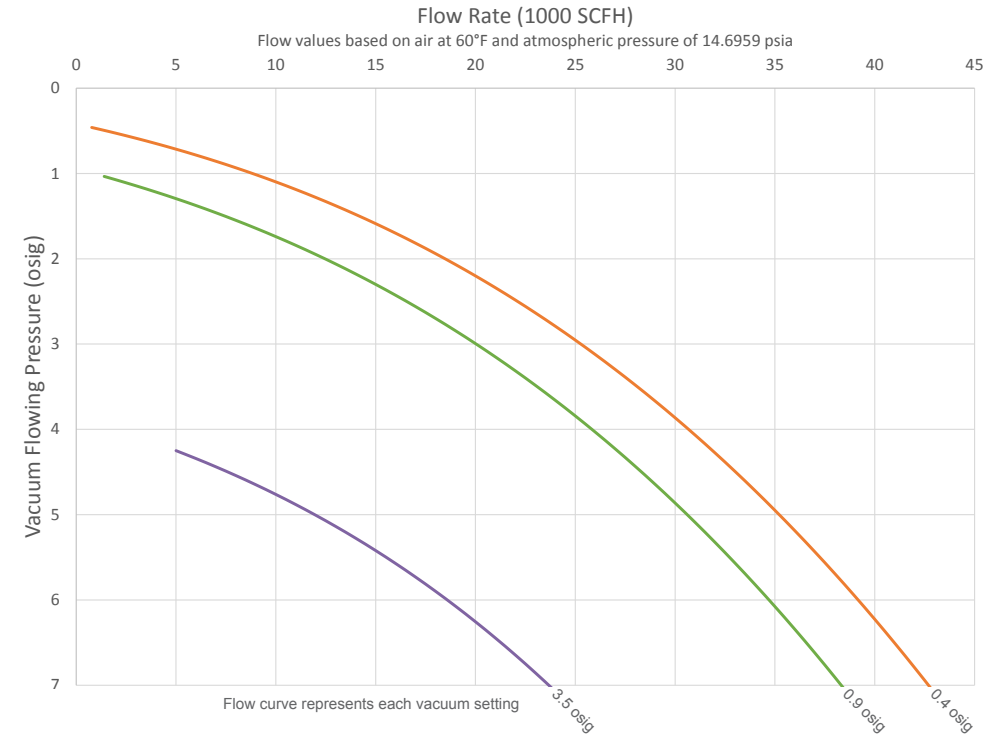
\*Additional pressure settings available



## PRESSURE RELIEF CAPACITY



## VACUUM RELIEF CAPACITY





## HOW TO ORDER

	MODEL #	SIZE	MATERIAL	OPTIONS
Product #:	L 1 2 - T H	-- 0 8	-- 1	□ □ □ □ □
Body Material: 1 = Aluminum	←		□	
Envelope Gasket: H = HNBR V = FKM F = Fluorosilicone	←		□	
Vacuum Diaphragm: H = HNBR V = FKM T = Fluoropolymer F = Fluorosilicone	←		□	
Pressure Setting*: 1 = 4 osig 2 = 6 osig 3 = 8 osig 4 = 12 osig 5 = 16 osig 6 = 24 osig 7 = 32 osig	←		□	
Vacuum Setting: 1 = 0.4 osig 2 = 0.9 osig 3 = 3.5 osig	←		□	
Coating: 0 = No Coating E = Polyester/PTFE Coating	←		□	

## OPTIONAL ACCESSORIES:

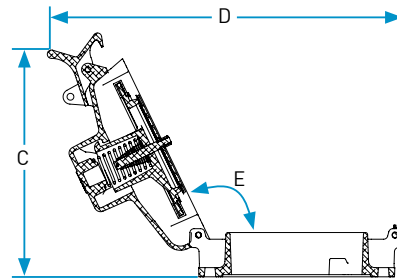
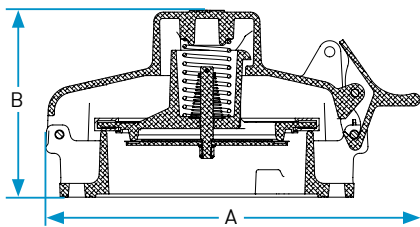
Base Gasket:		
GKT12TH08K302	=	Non-Asbestos
GKT12TH087602	=	FKM
GKT12TH087102	=	PTFE
GKT12TH084402	=	Black Neoprene
Mounting Kit:		
KS12THBS08P01	=	Zinc Plated Steel (1/2-13 UNC Hex Nut & Bolt)

Individual Parts, Maintenance Repair Kits, and Pre Assembled Center Hatch Assemblies are available. (Please contact a LaMOT representative or visit the website for more information)

\*Additional pressure settings available

## SPECIFICATIONS

SIZE		WIDTH				HEIGHT				ANGLE	ASSEMBLY WEIGHT	
		A (Closed)		D (Open)		B (Closed)		C (Open)		E (Open)		
in	mm	in	mm	in	mm	in	mm	in	mm	deg	lbs	kg
8	200	14.95	379	20.25	514	7.45	189	15.25	387	109.5	13.8	6.26



## THE RIGHT SOLUTIONS

An evolution of the Groth Corporation, LaMOT Valve & Arrestor funnels decades of industrial design, customer service, and made-to-order manufacturing into a new portfolio of upstream safety products. Living up to our heritage, the quality of our products is paramount, but our main focus is on people. That's why we work to give our partners the products and support you need to safely run your operation, while also helping you boost your bottom line.

### Pressure/Vacuum Relief Valves

Pressure/Vacuum Relief Valves are protection devices typically mounted on a nozzle opening on the top of a fixed roof atmospheric storage tank. Their primary purpose is to protect a tank against rupture or implosion by allowing the tank to breathe, or vent, when pressure changes in the tank due to normal operations.



### Emergency Relief Valves

Emergency Relief Valves protect tanks against excessive pressure caused by external fire exposure or flashes within the tank. Emergency relief valves provide higher flow capacity than standard pressure/vacuum relief valves.

### Deflagration Flame Arrestors

Deflagration Flame Arrestors are fire safety devices used to protect stored or process media from deflagrations. A deflagration flame arrestor can be used on the top of a tank or as an in-line safety device where combustible gases are transported through low pressure pipe lines.

# LAMOT®

## VALVE & ARRESTOR

A GROTH CORPORATION BRAND

## We Take Service Seriously

Our team of experienced upstream representatives are readily available to help you find the right products for the job, whether they're walking you through technical specs, performance characteristics, or material recommendations.

### FIND YOUR LOCAL REP

#### Roberto Perez

**Bob Herbert & Associates**  
Texas Gulf Coast /  
North & Central Texas  
2213 Aldine Bender Rd  
Houston, TX 77032  
281.449.1010  
Toll free: 800.327.9307  
perez@bherbert.com

#### Marlin Lewis

**Bob Herbert & Associates**  
8104 Lone Tree Road  
Victoria, TX 77901  
361.578.7956  
Toll free: 800.327.9314

#### Garry Lankford

**Bob Herbert & Associates**  
1801 HWY 281 South  
Alice, TX 78333  
361.664.0472  
Toll free: 800.327.9309

#### Sales

**Opeco**  
Oklahoma / Kansas  
Oklahoma City, OK  
405.634.8500  
dayopeco@gmail.com

#### Stacy Thatcher

**Control Equipment, Inc.**  
Permian Basin, SE New  
Mexico, North Texas and  
Texas Panhandle  
Odessa, TX  
432.332.1438  
thatcher@ceitexas.com

#### Scott McNeely

**Control Equipment, Inc.**  
Wichita Falls, TX  
940.767.5841  
smcneely@ceitexas.com

#### Ron Hedrick

**Control Equipment, Inc.**  
Lubbock, TX  
806.748.1720  
rhedrick@ceitexas.com

#### Hal West

**Control Equipment, Inc.**  
Pampa, TX  
806.669.7444  
hwest@ceitexas.com

#### Contact: Sales

**MPI Warehouse**  
913 East Murray Drive  
Farmington, NM 87401  
Phone 505.326.6664

#### Todd Broussard

**Specialty Equipment**  
South Louisiana,  
Mississippi and Alabama  
303 Mecca Drive  
Lafayette, LA 70508  
337.233.1308  
tbroussard@ses-sws.com

#### Contact: Sales

**Specialty Equipment Sales**  
724 15th Street  
Gretna, LA. 70053  
504.367.1389  
swsgretna@ses-sws.com

#### Contact: Sales

**Specialty Equipment Sales**  
#8 Donald Drive Suite C  
Laurel, MS. 39440  
601.428.5732  
swslaurel@ses-sws.com

#### Contact: Sales

**MPI Warehouse**  
4317 4th Avenue West  
Williston, ND 58801  
Phone 701.577.2777

#### Bob Davis

**Bob Davis Sales, Inc.**  
AR-LA-TX Region  
Kilgore, TX  
903.984.3093  
kilgore@bobdavissales.com

#### Contact: Sales

**Bob Davis Sales, Inc.**  
North Texas Region  
Cleburne, TX  
817.641.0500  
cleburne@bobdavissales.com

#### Contact: Sales

**Bob Davis Sales, Inc.**  
North Louisiana /  
South Arkansas Region  
Shreveport, LA  
318.222.7121  
shreveport@bobdavissales.com

#### Travis Tharp

**MPI Warehouse**  
Rocky Mountain Region  
755 North Glenn Road  
Casper, WY  
307.265.3333  
ttharp@mpiwarehouse.com

