

4400 SERIES LEVEL GAUGE INSTALLATION INSTRUCTIONS

THE KENCO MODEL 4400 SERIES LEVEL GAUGE COMES ASSEMBLED. SEE BACK SIDE OF SHEET FOR PARTS DRAWING.

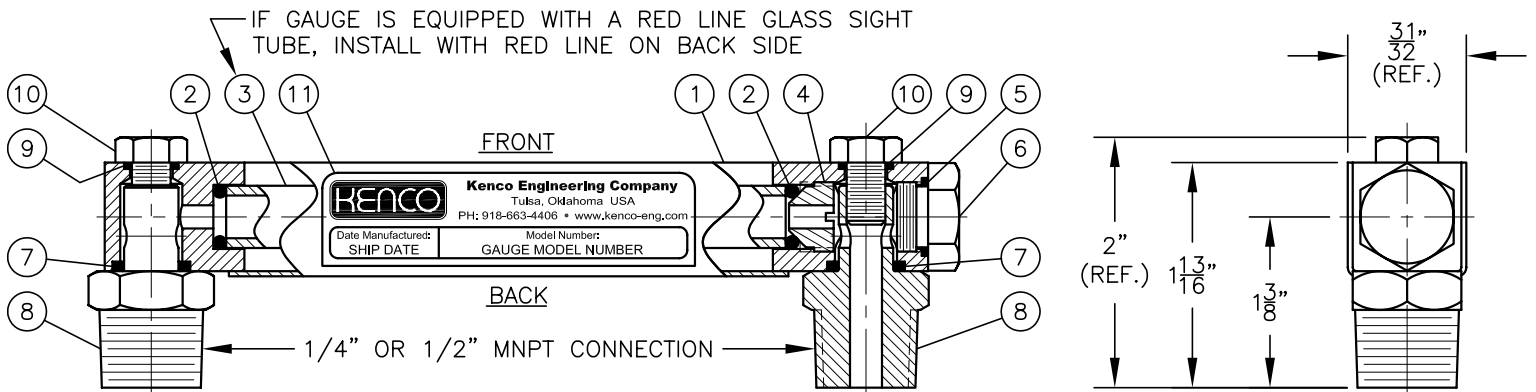
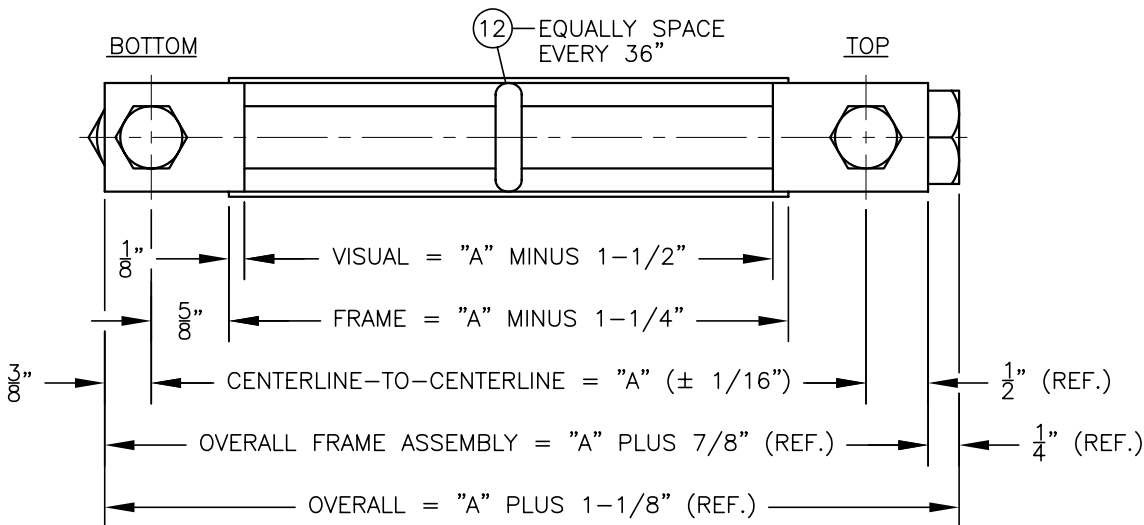
- STEP 1** IT WILL BE NECESSARY TO DISASSEMBLE THE MALE NPT CONNECTORS (ITEM 8) FROM THE GAUGE. THIS IS ACCOMPLISHED BY UNSCREWING THE HEX HEAD CAP SCREWS (ITEM 10).
- STEP 2** ONCE THE MALE CONNECTORS HAVE BEEN REMOVED FROM THE GAUGE ASSEMBLY, APPLY THREAD SEALANT TO THE PIPE THREADS OF THE CONNECTORS AND INSTALL THEM INTO THE TANK MOUNTING CONNECTIONS. NOTE: MAKE SURE THAT CONNECTORS ARE INSTALLED WITH THE SAME INSERTION DEPTH TO ENSURE A POSITIVE SEAL BETWEEN CONNECTORS AND GAUGE FRAME ASSEMBLY END BLOCKS.
- STEP 3** CAREFULLY SLIDE O-RING (ITEM 7) OVER THE MALE CONNECTORS AS SHOWN ON THE PARTS DRAWING.
- STEP 4** SLIDE THE GAUGE FRAME ASSEMBLY OVER THE MALE CONNECTORS. THE TOP OF THE GAUGE IS IDENTIFIED BY THE HEX PLUG. WHEN THE GAUGE HAS BEEN POSITIONED AGAINST THE MALE CONNECTORS, MAKE CERTAIN THE O-RINGS ARE IN THE O-RING COUNTERBORES.
- STEP 5** REINSTALL HEX HEAD CAP SCREWS (ITEM 10) AND O-RINGS (ITEM 9) WITH GAUGE POSITIONED ON THE MALE CONNECTORS. CAUTION: ON GAUGES WITH BRASS CONSTRUCTION, IT IS IMPORTANT NOT TO OVERTIGHTEN CAP SCREWS DUE TO EASE OF STRIPPING THE THREADS.



P.O. Box 470426 -- Tulsa, Oklahoma 74147
Phone: 918-663-4406 -- Fax.: 918-663-4480
www.kenco-eng.com -- E-mail: info@kenco-eng.com

(09-20-06)

MODEL 44M25 / 44M50



DIMENSIONAL INFORMATION AND SIGHT TUBE LENGTH FORMULA:
 CENTERLINE-TO-CENTERLINE (DIMENSION "A") TO BE SPECIFIED BY CUSTOMER
 SIGHT TUBE LENGTH = "A" MINUS 1-1/4"

IMPORTANT NOTE:
 CUSTOMER MUST SPECIFY MODEL NUMBER LOCATED ON GAUGE IDENTIFICATION DECAL WHEN ORDERING REPLACEMENT PARTS.

BILL OF MATERIALS		
ITEM	QTY.	DESCRIPTION
1	1	FRAME, GAUGE (ASSEMBLY)
2	2	SEAL, O-RING FOR SIGHT TUBE
3	1	TUBE, SIGHT (1/2" O.D.)
4	1	SEAT, PACKING FOR SIGHT TUBE O-RING SEAL
5	1	SEAL, O-RING FOR SEAL PLUG
6	1	PLUG, SEAL FOR SIGHT TUBE ACCESS PORT
7	2	SEAL, O-RING FOR PROCESS CONNECTIONS
8	2	CONNECTION, PROCESS
9	2	SEAL, O-RING FOR CAP SCREWS
10	2	SCREW, CAP HEX HEAD 5/16"-18UNC X 1/2" LG.
11	1	DECAL, IDENTIFICATION
12	AS REQ'D.	ISOLATOR, SIGHT TUBE